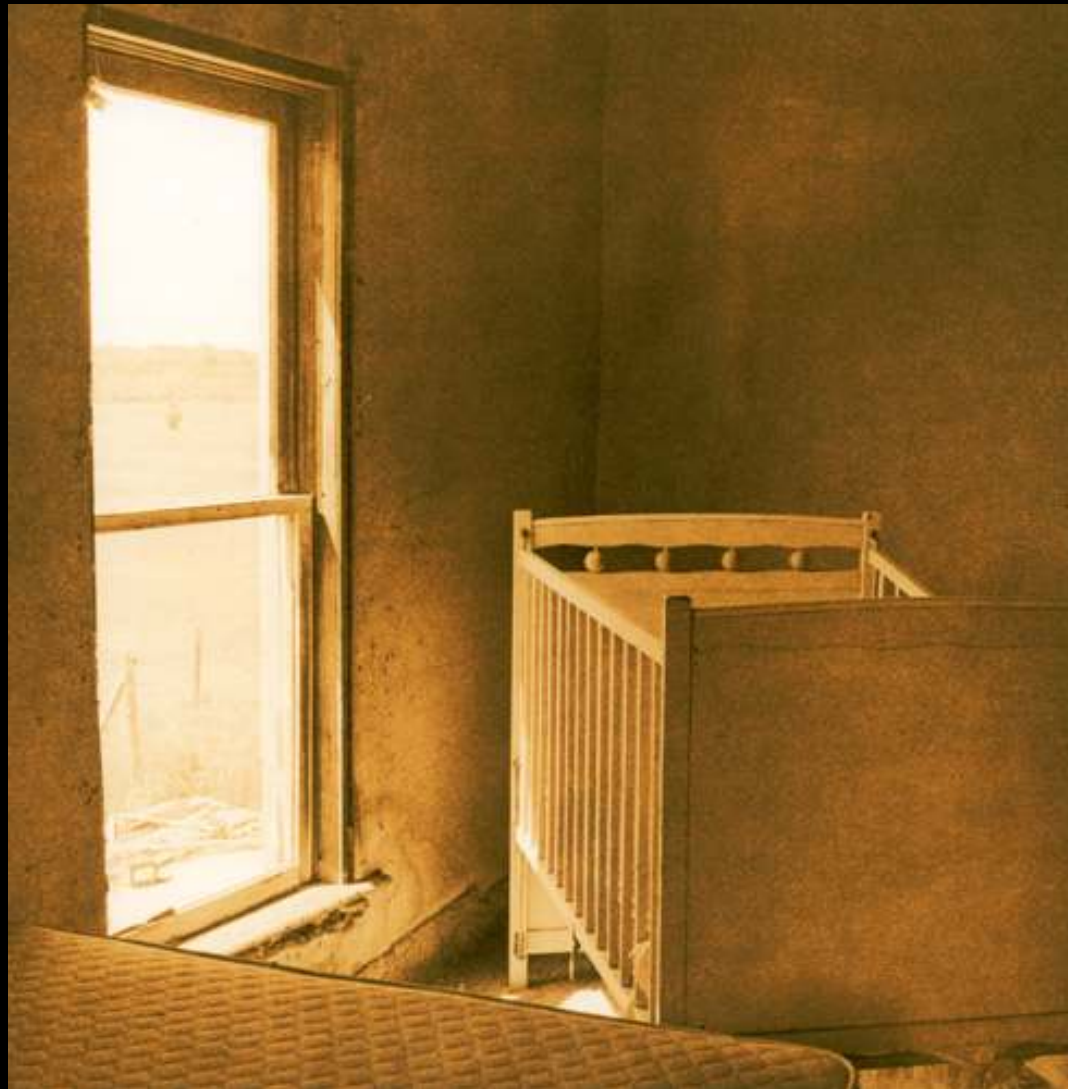


What is lith printing and why
do I do it?

- Printing method using an “over-exposed” negative with extremely diluted lith developer
- Tends to be a warm look with grainy high contrast shadows and lower contrast highlights
- Look depends on paper, developer, toning and technique...lots of levers to get the look you want









Basic Approach

1. Select paper
2. Expose paper (start at about 4X)
3. Develop in extremely dilute lith developer
4. Continuously agitate
5. Development complete when blacks are where you want them



Controlling highlights, shadows

Shadows controlled by developing time

Highlights controlled by exposure

Controlling highlights, shadows

Shadows controlled by developing time

Highlights controlled by exposure

Or.....

More exposure, less contrast

Less exposure, more contrast

Tone is controlled by:

Paper choice

Developer “maturity”

Developer choice and dilution

....and toners



Mature, hot developer, Fomatone



Mature, hot developer, Fomatone, gold toned



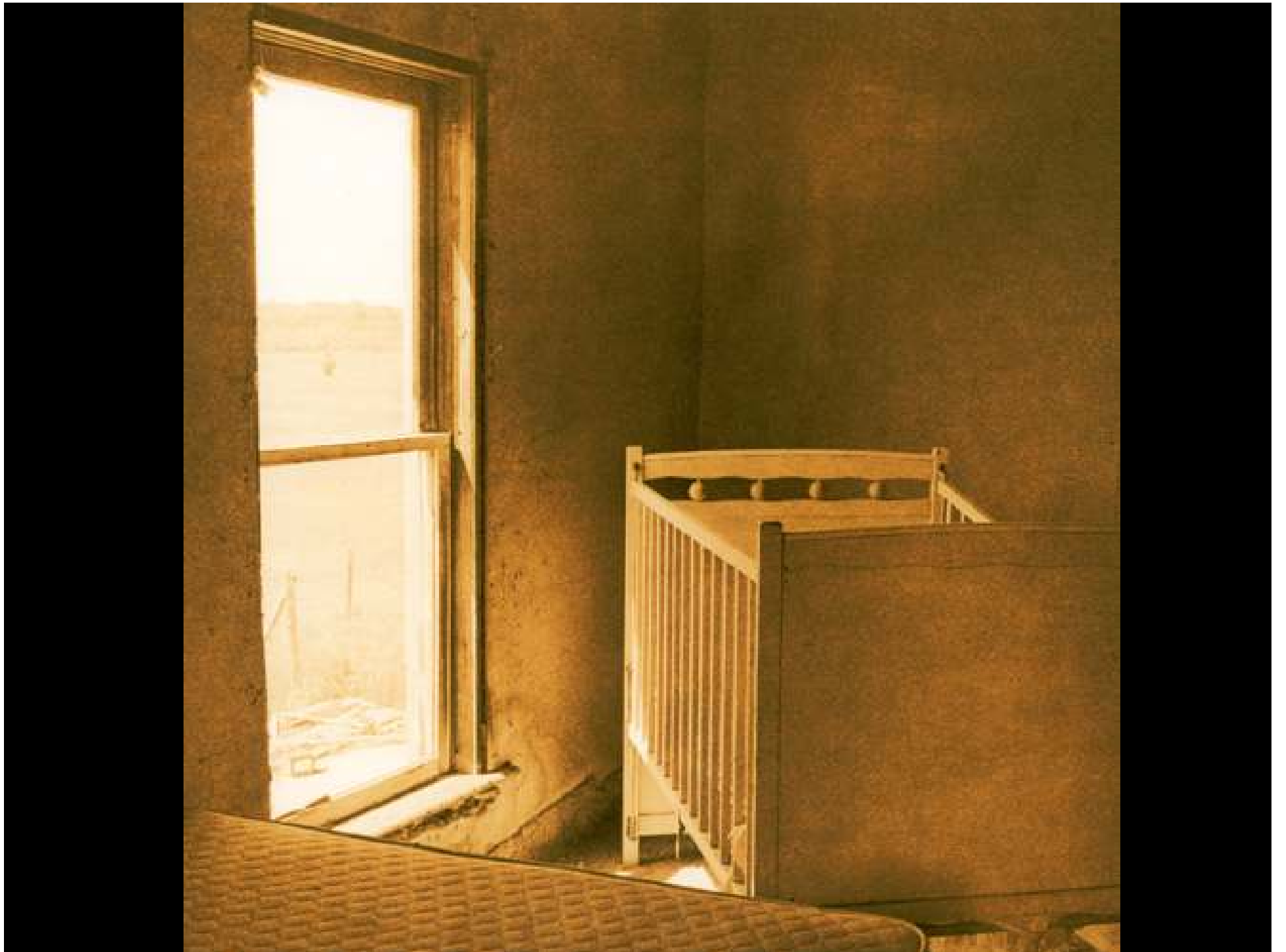
Hot developer, Arista EDU (Fomabrom) glossy

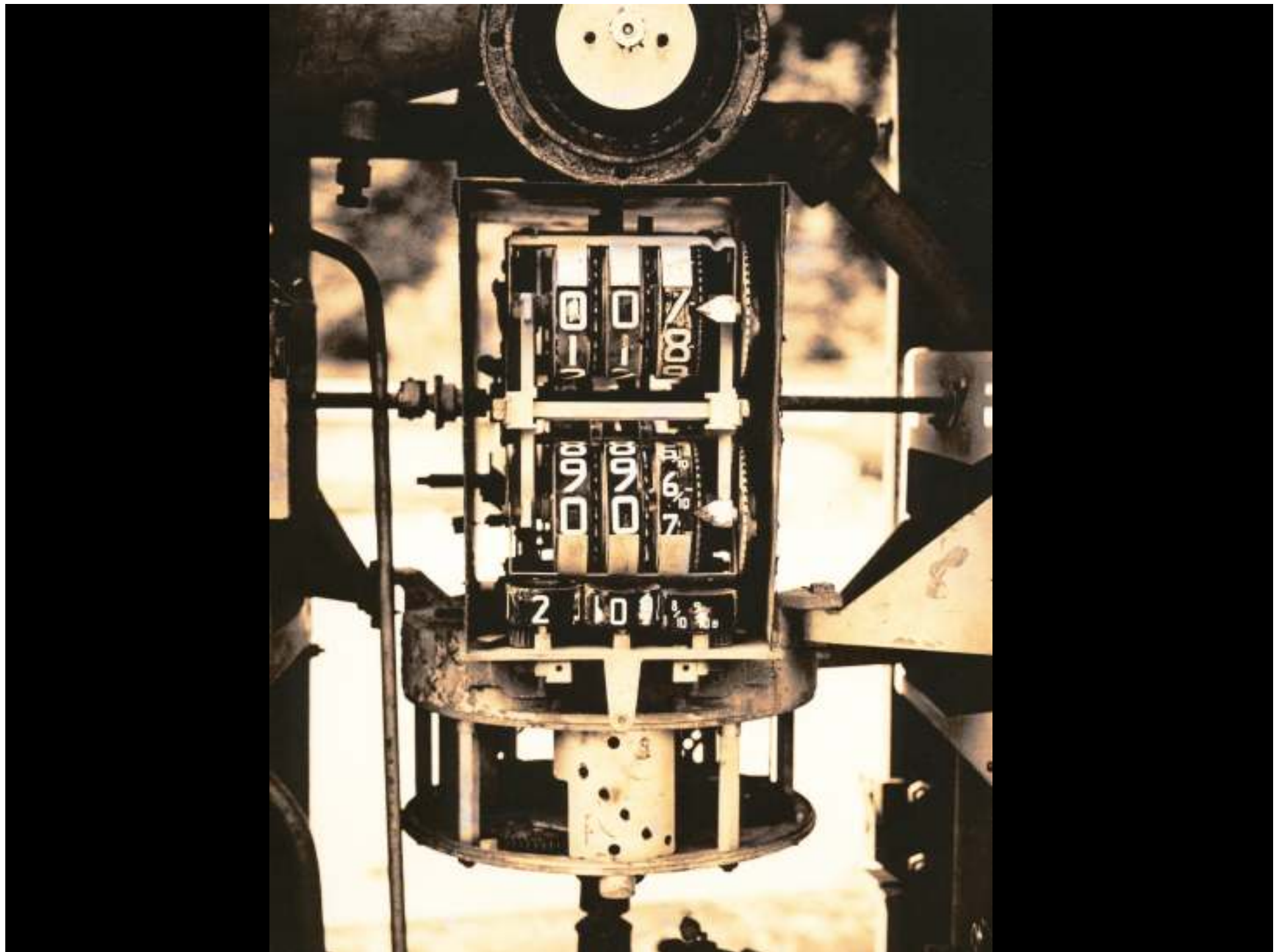


Hot developer, Arista Silver Artist (BFK paper)

So what is my approach....

- Developer: Rollei/Maco (RIP) or Moersch diluted 1:1:50 plus 33% old used developer (old brown), roughly 90-100F
- One size bigger tray floated in very hot water for easy agitation
- LED safelights for lots of safe light
- Fomatone for color, Fomabrom 123 for lovely beige highlights and subtle tones, Slavich or Fomabrom for slightly warm and lots of grain, Ilford WT for subtlety and low grain
- Select prints for early in session vs late (less color, more color)











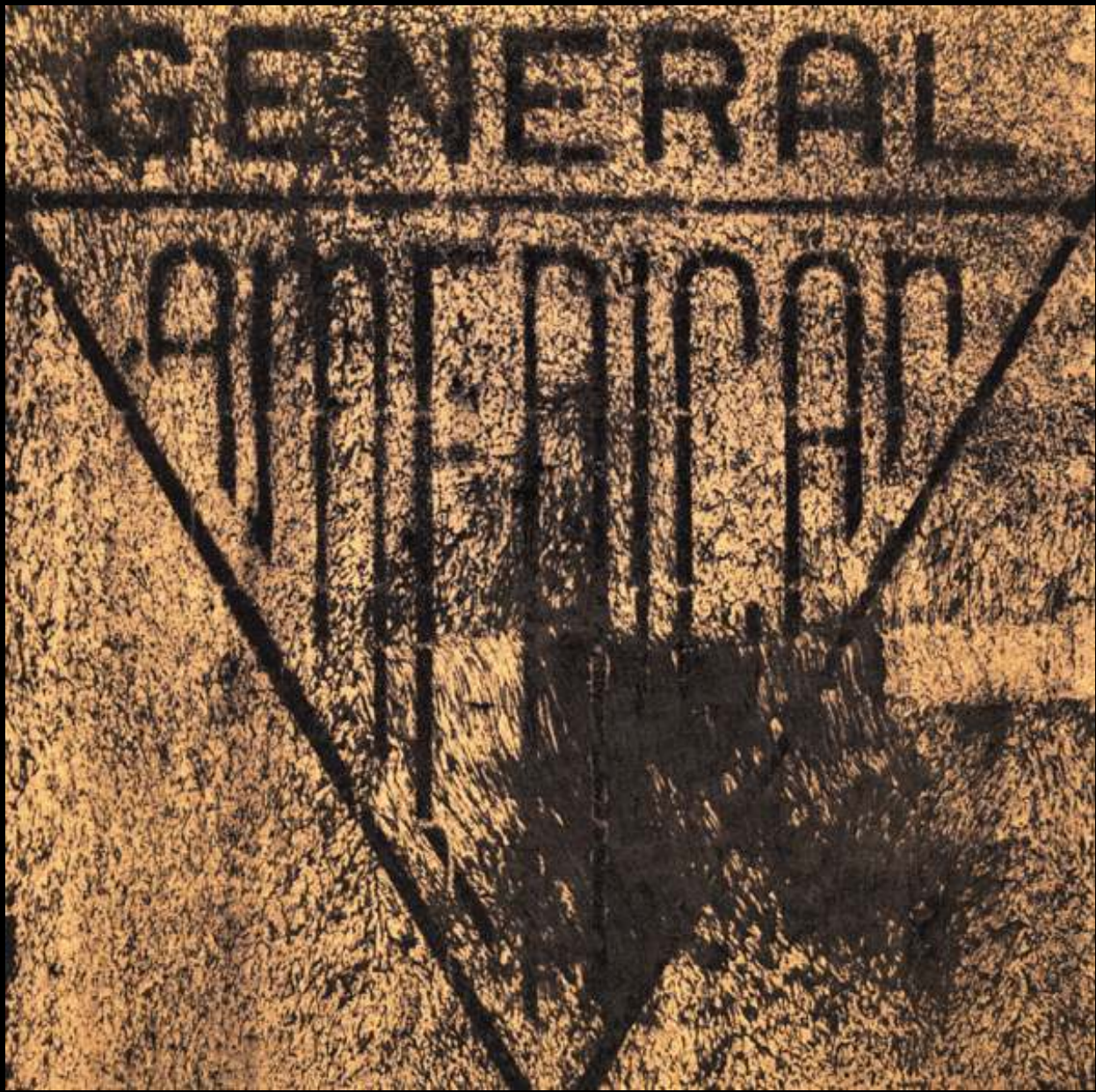
















Questions?

Contact

mark@markjamesfisher.com

or visit

www.markjamesfisher.com